

# TBI-TRH20 - Linear Guides



FEATURES

- **Size: 20mm Linear Guide Rail**
- **Dynamic Load: Up to 25.03 kN**
- **Static Load: Up to 49.6 kN**
- **Rail Lengths Up to 4 Meters**
- **Custom Rail Sizes Available**
- **Matched Bearing Blocks**
- **End-Seal Options: Standard or Reinforced**
- **Pre-Load: Clearance, Standard, or Light**



DESCRIPTION

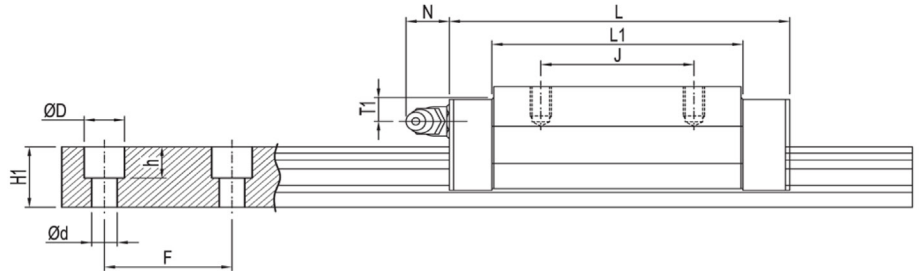
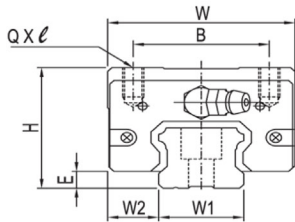
TBI's high-quality linear guides deliver precision, durability, and affordability in one single package! Available in a 20 mm size, this sleek, high-quality design incorporates the rail and the block together to provide a convenient, easy-to-use product. Little friction resistance allows for high accuracy and speed, while several preload options are available for increased rigidity and performance. They are offered in standard or custom lengths, and are ideal for dynamic loads up to 25.03 kN and static loads up to 49.6 kN. All standard blocks come with a bottom seal and double lip end seals.

SPECIFICATIONS

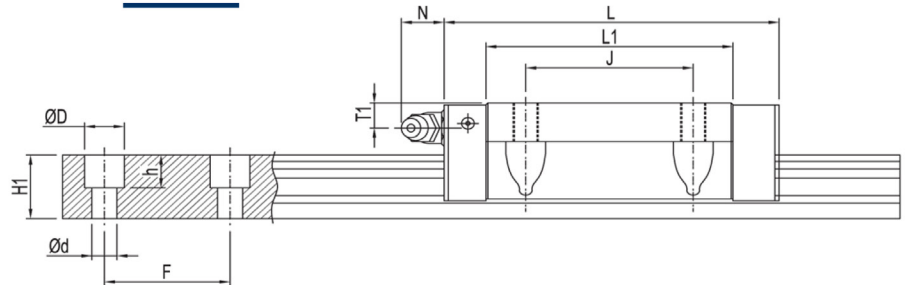
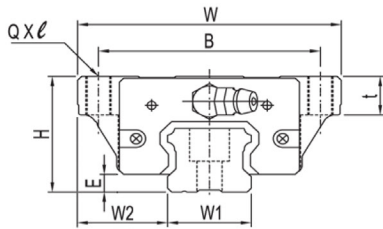
Block Part Number	Fabrication Dimensions (mm)			Block Dimensions (mm)								Load Capacities (KN)		Static Moment (Nm)			Weight (lbs)
	H	W <sub>2</sub>	E	W	B	J	L	L1	QxL	T	N	C	C <sub>0</sub>	M <sub>x</sub>	M <sub>y</sub>	M <sub>z</sub>	
TBI-TRH20FN-N-Z0	30	21.5	4.6	63	53	40	75.6	54	M6x10	6.5	14	20.1	36.2	366.1	326.2	326.2	0.8
TBI-TRH20FE-N-Z0	30	21.5	4.6	63	53	40	99.6	78	M6x10	6.5	14	25.0	49.6	501.0	620.1	620.1	0.6
TBI-TRH20VE-N-Z0	30	12	4.6	44	32	50	99.6	78	M5x7	6.5	14	25.0	49.6	501.0	620.1	620.1	1.2
TBI-TRH20VL-N-Z0	30	12	4.6	44	32	36	79	59	M5x5	6.5	14	20.8	38.2	384.7	362.5	362.5	0.8
TBI-TRH20VN-N-Z0	30	12	4.6	44	32	36	75.6	54	M5x7	6.5	14	20.1	36.2	366.1	326.2	326.2	0.7

Rail Part Number	Rail Dimensions (mm)							Rail Length (mm)	Weight (lbs)
	W <sub>1</sub>	H <sub>1</sub>	F	D	d	d x D x h			
TBI-TR20N-0150-15-15	20	16.5	60	9.5	6	6 x 9.5 x 8.5	150	0.8	
TBI-TR20N-0300-30-30	20	16.5	60	9.5	6	6 x 9.5 x 8.5	300	1.5	
TBI-TR20N-0500-10-10	20	16.5	60	9.5	6	6 x 9.5 x 8.5	500	2.5	
TBI-TR20N-0700-20-20	20	16.5	60	9.5	6	6 x 9.5 x 8.5	700	3.5	
TBI-TR20N-0900-30-30	20	16.5	60	9.5	6	6 x 9.5 x 8.5	900	4.5	
TBI-TR20N-1100-10-10	20	16.5	60	9.5	6	6 x 9.5 x 8.5	1100	5.5	
TBI-TR20N-1300-20-20	20	16.5	60	9.5	6	6 x 9.5 x 8.5	1300	6.5	
TBI-TR20N-1500-30-30	20	16.5	60	9.5	6	6 x 9.5 x 8.5	1500	7.5	
TBI-TR20N-1700-10-10	20	16.5	60	9.5	6	6 x 9.5 x 8.5	1700	8.6	
TBI-TR20N-1900-20-20	20	16.5	60	9.5	6	6 x 9.5 x 8.5	1900	9.6	
TBI-TR20N-2100-30-30	20	16.5	60	9.5	6	6 x 9.5 x 8.5	2100	10.6	
TBI-TR20N-2300-10-10	20	16.5	60	9.5	6	6 x 9.5 x 8.5	2300	11.6	
TBI-TR20N-2500-20-20	20	16.5	60	9.5	6	6 x 9.5 x 8.5	2500	12.6	
TBI-TR20N-2700-30-30	20	16.5	60	9.5	6	6 x 9.5 x 8.5	2700	13.6	
TBI-TR20N-2900-10-10	20	16.5	60	9.5	6	6 x 9.5 x 8.5	2900	14.6	
TBI-TR20N-3100-20-20	20	16.5	60	9.5	6	6 x 9.5 x 8.5	3100	15.6	
TBI-TR20N-3300-30-30	20	16.5	60	9.5	6	6 x 9.5 x 8.5	3300	16.6	
TBI-TR20N-3500-10-10	20	16.5	60	9.5	6	6 x 9.5 x 8.5	3500	17.6	
TBI-TR20N-3700-20-20	20	16.5	60	9.5	6	6 x 9.5 x 8.5	3700	18.6	
TBI-TR20N-3900-30-30	20	16.5	60	9.5	6	6 x 9.5 x 8.5	3900	19.6	
TBI-TR20N-4000L	20	16.5	60	9.5	6	6 x 9.5 x 8.5	4000	20.1	

**TRH-V**



**TRH-F**



**Force Diagram**

